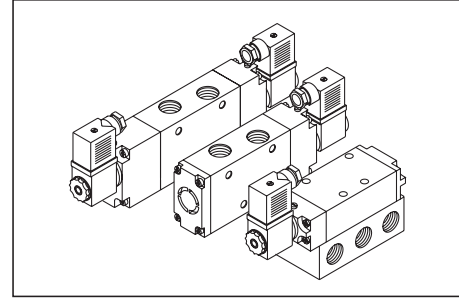


## G 1/4 - 5/2 Solenoid Operated High Flow Valves (Maxflow Series)

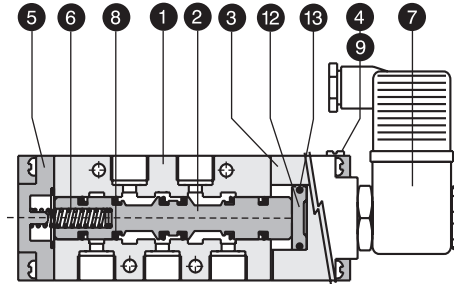
- Streamlined construction.
- Contoured dynamic seals ensure longer life
- Higher flow capacities.
- Manual override as a standard feature.
- Available with 3W and 10W coil



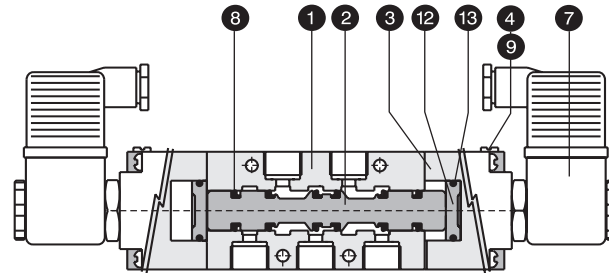
### PART LIST

NO.	DESCRIPTION	QTY.	
		Single Sol.	Double Sol.
1	Valve Body	1	1
2	Spool	1	1
3	Solenoid Housing	1	2
4	Manual Override	1	2
5	Spring Housing	1	-
6	Compression Spring	1	-
7	Coil with plug in connector	1	2
8	Spool seal	6	6
9	M.O.Pin 'O' Ring	1	2
10	Sub base 'O' ring *	5	5
11	Sub base plate	1	1
12	Piston	1	2
13	Piston seal	1	2

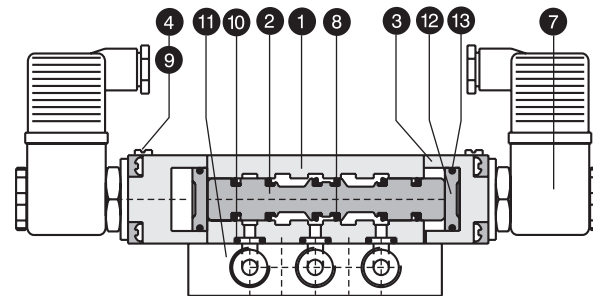
Seal Kit consists of item (2+8) ,9, 10 & 13  
\* ( Item No. 10 With sub base kit only)



5/2 High Flow Single Solenoid Valve (Side Ported Design)



5/2 High Flow Double Solenoid Valve (Side Ported Design)



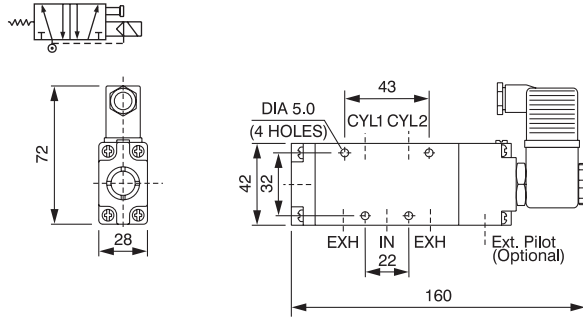
5/2 High Flow Double Solenoid Valve (Sub Base Design)

### COIL SPECIFICATIONS

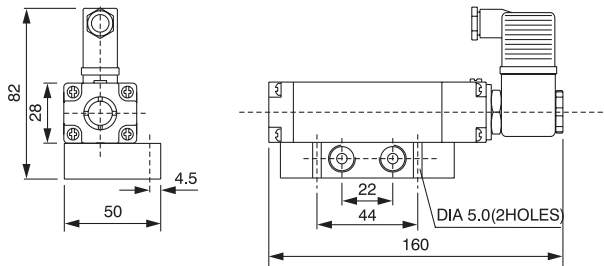
TYPE	VALVE WITH ( G25 - 4W ) COIL	VALVE WITH ( G50 - 8W ) COIL
Construction	SS plunger with NBR seals, SS magnet core assembled with brass adaptor	
Coil Voltages	AC : 12, 24, 42, 110, 230V 50/60 Hz DC : 12, 24, 42, 110, 240 V	AC : 12, 24, 42, 110, 230V 50/60 Hz DC : 12, 24, 42, 110, 240 V
Voltage range	± 10%	+ 10% / - 15%
Power consumption	AC : Pull : 7.5 VA, Hold : 5 VA DC : 3 WATT	AC : Pull 21VA, Hold : 14VA DC : 10 WATT
Duty cycle	100%	
Class of insulation	F ( Winding wire of class 'H' insulation )	
Degree of protection	IP 65 - IS 2147	
Cable connector	DIN 43650 - PG 9	PG 11

High flow valve is also offered with flame-proof coil duly certified by CMRI Dhanbad for grades I, II A and II B.  
Refer data sheet SPA-03 for details.

## G 1/4 - 5/2 SINGLE SOLENOID HIGH FLOW VALVE



Side Ported Design

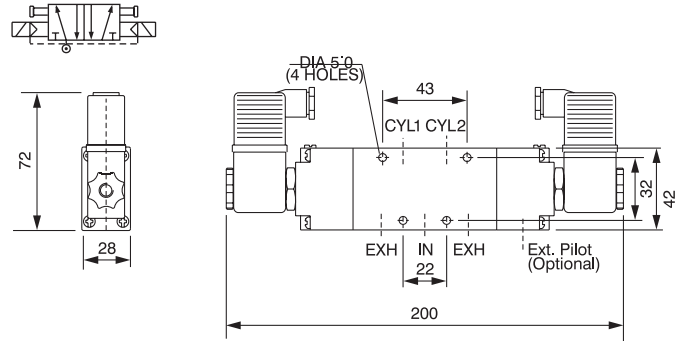


Sub Base Design

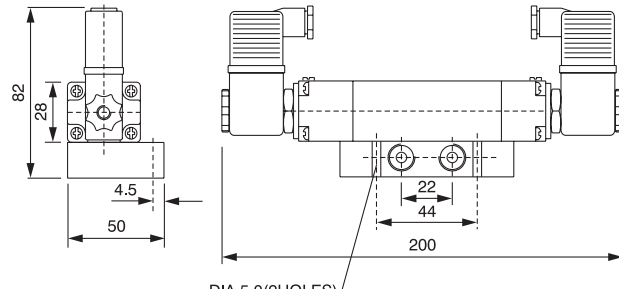
### SPECIFICATIONS

Medium	Compressed air, filtered
Design	Spool type with air spring return
Working pressure	1.8 - 10 kg/sq.cm
Ambient / fluid temp.	- 10° C to 55° C
Cv ( Nominal flow )	1.4 ( 1400 lit/min. )
Response time at 5 bar	ON time : 10 m.s. OFF time : 35 m.s.
Manual override	Screw type, detent
Optional features	PIC with light indicator External pilot actuation
Materials	Body : Aluminium/Brass/SS304/SS316 Spool : Aluminium Seals : NBR / HNBR

## G 1/4 - 5/2 DOUBLE SOLENOID HIGH FLOW VALVE



Side Ported Design

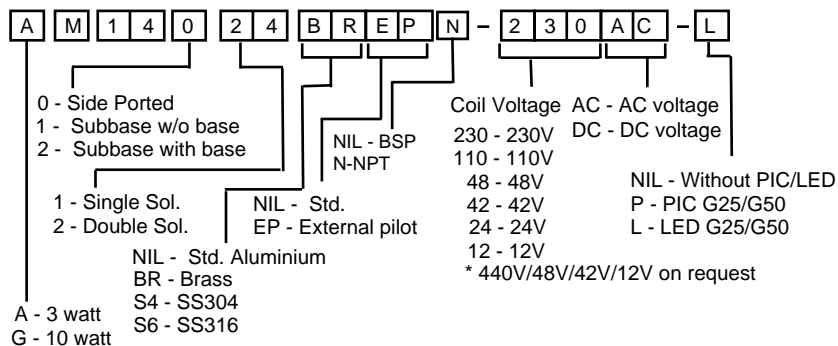


Sub Base Design

### SPECIFICATIONS

Medium	Compressed air, filtered
Design	Spool type
Working pressure	1.5 - 10 kg/sq.cm
Ambient / fluid temp.	- 10° C to 55° C
Cv ( Nominal flow )	1.4 ( 1400 lit/min. )
Response time at 5 bar	ON Time: 10 m.s.
Manual override	Screw type, detent
Optional features	PIC with light indicator External pilot actuation
Materials	Body : Aluminium/Brass/SS304/SS316 Spool : Aluminium Seals : NBR / HNBR

### ORDERING INFORMATION



### ORDERING INFORMATION SEALKIT

	Port	Base	Seal kit side ported	Seal kit sub-base
single sol.	1/4"	BS14*	SKM14014	SKM14214
double sol.	1/4"	BS14*	SKM14024	SKM14224

\* - NIL - for BSP, N - for NPT port

Note : All internal components will be same as per std. valve in Brass/SS304/ SS316 MOC valve except body, spring housing & solenoid housing.