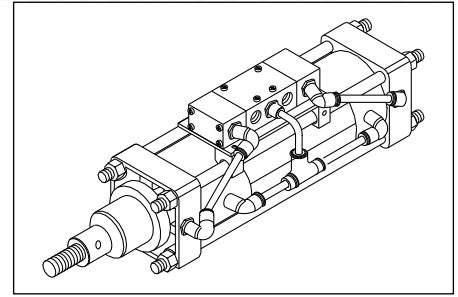


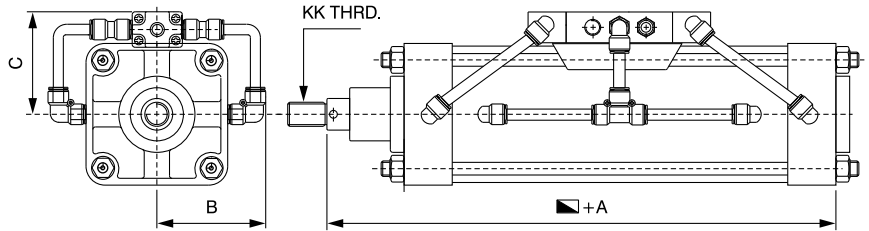
Self Reciprocating Cylinder & Air Motor

- Above products are developed for specific application like self reciprocation, 90 actuation, impact loading etc.
- Product to specific need can developed against requirements.



SELF RECIPROCATING CYLINDERS

- Offered with 2-1/4", 3" and 4" cylinders.
- Useful where continuous reciprocation of piston rod is required.
- Adjustment of frequency of operation possible with flow control valve.
- Being all pneumatic construction, this device is particularly useful where electrical installation has to be avoided.



CYL. DIA	STROKE + A	B	C	KK THRD.
57 (2-1/4")	202	54	57	1/2" - 16 BSF
76 (3")	228	64	65	3/4" - 12 BSF
101 (4")	228	75	83	3/4" 12 BSF

ORDERING INFORMATION

CYL. SERIES	BORE SIZE	STROKE IN mm
S R C	2 1/4" = 02	97mm = 097
	3" = 03	200mm = 200
	4" = 04	5 inch = 127

AIR MOTOR

- Valve mounted on cylinder & duly connected.
- Suggested combination :

CYLINDER BORE	VALVE
1-1/2" to 4" 32mm to 100mm	1/4" Spool valve
5" and 6" 125mm to 160mm	1/2" Poppet valve
8" and above 200mm and above	3/4" Poppet valve
12" & 14" 250mm & 320mm	1" Poppet valve

- For specific requirements contact us.
Standard - Copper tubing, brass fitting.
SS304/SS316 on request

